

Certified, Filed and or Recorded on
Dec. 16, 2008 AT 01:44PM

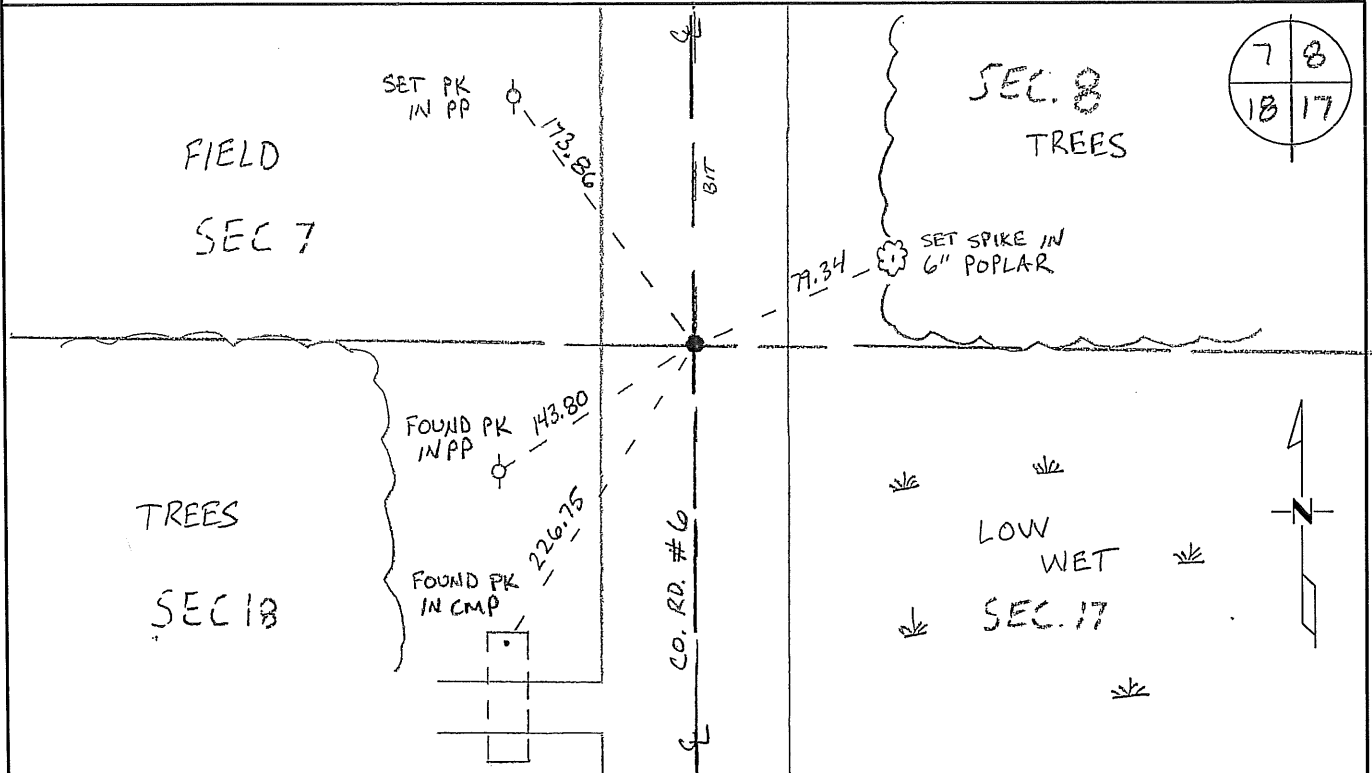
Signed: BW
MARILYN J NOVAK G. V.
BENTON COUNTY MINNESOTA
MARILYN J NOVAK
COUNTY RECORDER

CERTIFICATE OF LOCATION OF GOVERNMENT CORNER

NORTHEAST Corner of Section 18, Township 37N, Range 28W
4TH Principal Meridian, State of Minnesota, County of Benton

At the corner location shown on the sketch:

- On 10/15/08 found a CAST IRON MONUMENT DOWN 0.1'
- left monument as found lowered monument removed monument (explain)
- On _____ placed an _____



Statement of evidence for this corner location is on back of this page.

I hereby certify that this document was researched and prepared by me or under my direct supervision and that I am a licensed Land Surveyor under the laws of the State of Minnesota.

Signature Jan W. Olf
Deputy Benton County Surveyor
License No. 45872

Date: 11/06/2008

Benton County Surveyor's Office
 Jason W. Oberg, Deputy County Surveyor
 Minnesota License No. 45872

Statement of Evidence:**I182**

Northeast Corner of Section 18, Township 37 North, Range 28 West, Maywood Township, 4th Principal Meridian, Benton County, Minnesota.

1855 US General Land Office survey established this corner and set a wood post and bearing trees were recorded as follows:

10" Elm	S 31 W	75 links
6" Elm	N 2 ½ E	22 links

1927 County Engineer's Notebook No. 80 for survey of SAR 6 running north to south. Notes show corner marked by an iron bar set in center of road and on fence line east and west. Notes give a delta angle of 0-36' right. Ties:

TP	SE	29.0'
4 th FP	SW	47.3'

Later ties also listed in County Surveyor's Record Book 2, page 240, to a hub at corner on fence line east-west. Ties:

PP	SW	49.5'
Cor FP	W	36.05'

1937 County Highway ties:

TP	SE	39.4
4 th FP	SW	40.5

1944 County Engineer's Notebook No. 163 contains a road survey for SAR 6 running from south to north on section line. Corner is shown marked by a 2" hub set in center of road with fence lines east and west. Ties:

PP	SW	49.5'
Cor. FP W		36.0'

1953 County Engineer's Notebook No. 196 contains a road survey for SAR 6 running from south to north on section line. Same information as in 1944.

1979 William Lunser, LS 9394, found ¼ " iron pin per County Highway plans which showed corner in north-south road and in line with fences east-west. He set ½ " iron pipe.

1988 William Lunser replaced iron pipe with cast iron monument and filed Certificate of Location (Doc. No. 191268).

2008 The County Surveyor's Office searched and found a cast iron monument, as placed by Lunser in 1988, along centerline of a north-south road (County Road No. 6). Running from north to south gives a deflection angle at the corner of 0°34'23" right, which agrees with the 1927 deflection angle of 0°37' right. Position falls in line with tree lines to the east and west. The position is accepted as the best evidence. Ties were updated.

County Coordinates obtained by GPS
 NAD 83 (1996 Adjustment)
 N-153807.372
 E-547364.753

CERTIFICATE OF LOCATION OF GOVERNMENT CORNER

Northeast Corner of Section 18, Township 37, Range 28, 4th P.M.

STATE OF MINNESOTA, County of Benton

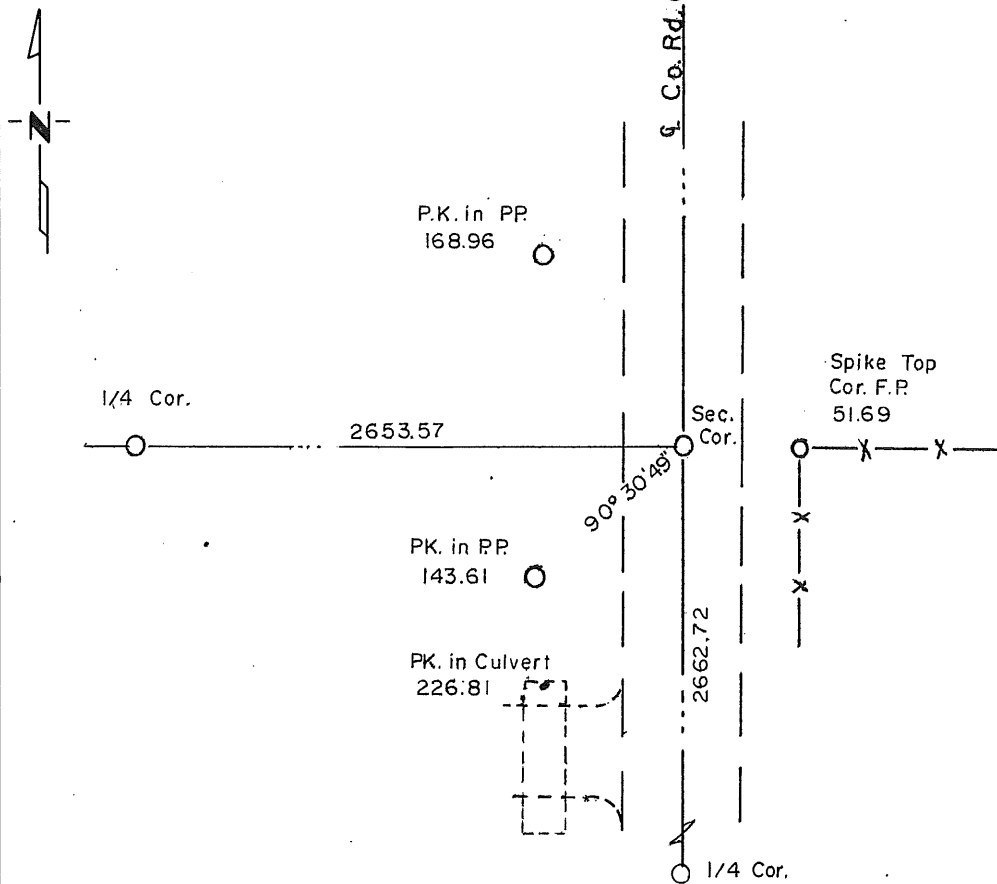
At the corner location shown on the sketch:

On _____ found a _____
DATE

left monument as found, lowered monument, removed monument (explain)

On 12-8-88 placed a Benton County Cast Iron Monument
DATE

SKETCH OF REFERENCE TIES



Statement of evidence relative to this corner location is on back of page.

I hereby certify that this document and the data contained herein was prepared by me or under my direct supervision.

William J. Langer 12/15/88
SIGNATURE DATE

Registration No. 9394

Land Surveyor, Professional Engineer

County Surveyor, County Engineer

OFFICE OF THE REGISTER OF DEEDS

County of _____

I hereby certify that this document was filed in the Reg. of Deeds office at _____ .M. on the _____ day of _____ A.D., 19 _____

Register of Deeds _____

By _____, Deputy

DOCUMENT NO. _____

Statement of Evidence:

9-19-79 County Highway Road plans showed this corner to be at centerline of road north-south and a fence line east-west. Found 1/4" pin at this location and verified ties per County Road plans. Set 1/2" iron pipe at this location.

12-8-88 Found 1/2" iron pipe as set in 1979 and verified ties. Set Benton County Cast Iron Monument at this location.

191268

OFFICE OF
BENTON COUNTY RECORDER
BENTON COUNTY, MN
CERTIFIED TO BE FILED
AND FOR RECORDED ON

JAN 12 12 09 PM '89

ALICE G. ENGELMEYER
COUNTY RECORDER

BY  DEPUTY