

Certified, Filed and or Recorded on  
Dec. 16, 2008 AT 01:44PM

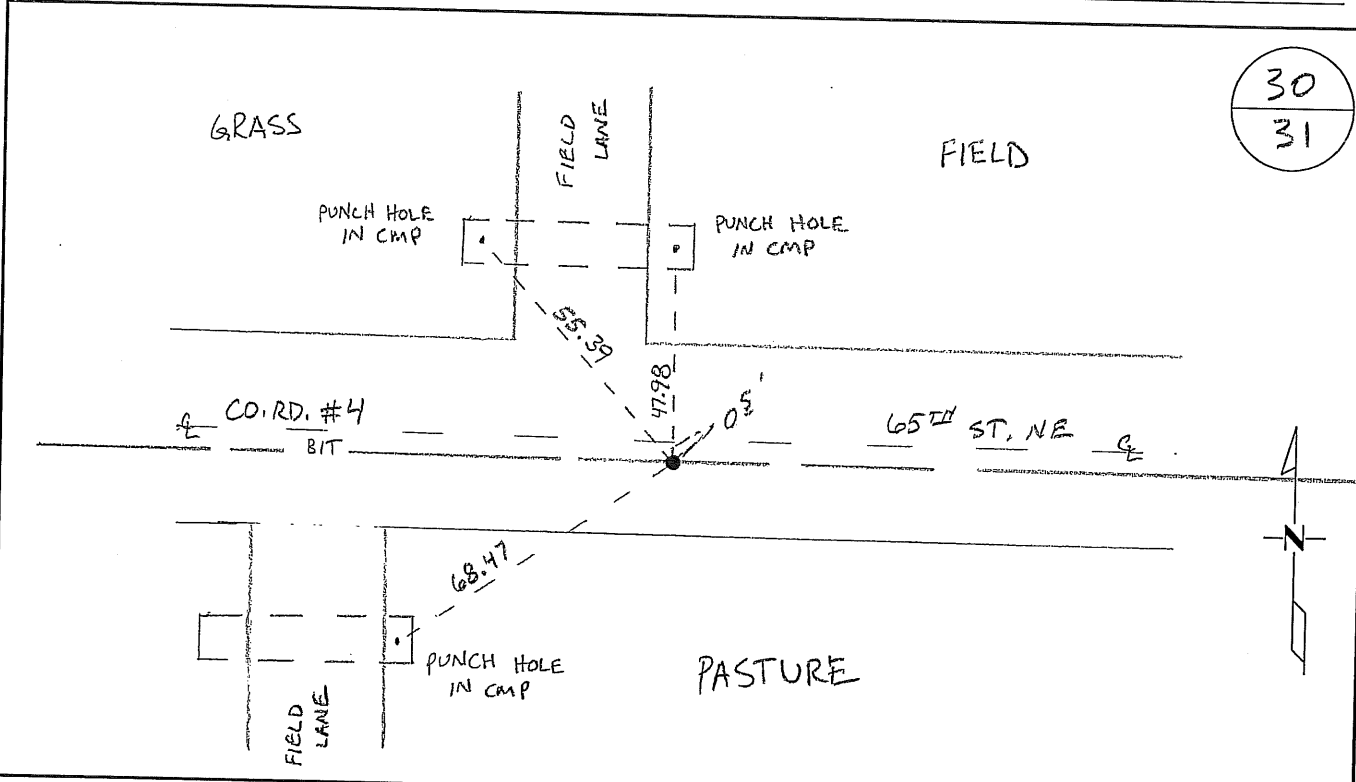
Signed: BW  
MARILYN J NOVAK 6 V  
BENTON COUNTY MINNESOTA  
MARILYN J NOVAK  
COUNTY RECORDER

# CERTIFICATE OF LOCATION OF GOVERNMENT CORNER

NORTH QUARTER Corner of Section 31, Township 37N, Range 28W  
4TH Principal Meridian, State of Minnesota, County of Benton

At the corner location shown on the sketch:

- On \_\_\_\_\_ found a \_\_\_\_\_
- left monument as found       lowered monument       removed monument (explain)
- On 10/15/08 placed an PK NAIL WITH BENTON COUNTY SURVEYOR DISK



Statement of evidence for this corner location is on back of this page.

I hereby certify that this document was researched and prepared by me or under my direct supervision and that I am a licensed Land Surveyor under the laws of the State of Minnesota.

Signature *Jan W. Oley*  
Deputy Benton County Surveyor  
License No. 45872

Date: 11/06/2008

Benton County Surveyor's Office  
 Jason W. Oberg, Deputy County Surveyor  
 Minnesota License No. 45872

**Statement of Evidence:****I311**

North Quarter Corner of Section 31, Township 37 North, Range 28 West, Maywood Township, 4<sup>th</sup> Principal Meridian, Benton County, Minnesota.

- 1855 Original US General Land Office survey set a wood post at this location and bearing trees were recorded.
- |             |        |          |
|-------------|--------|----------|
| 24" Bur Oak | S 59 E | 53 links |
| 10" Blk Oak | N 26 W | 11 links |
- A line tree is noted as a 12" Bur Oak East 0.28 chains.
- 1901 County Surveyor's Record Book A, Map No. 42, shows a survey of Section 31 by John E. Whilt. Distances shown are 36.71 chains (2422.86 feet) to the NW corner and 39.46 chains (2604.36 feet) to the NE corner.
- 1912 County Engineer's Notebook 1, pages 37 to 42, contains a road survey for State Road No. 10. Notes occupation line north-south at corner. Stationing gives distances of 2433 feet to the NW corner and 2611 feet to the NE corner of Section 31.
- 1938 County Engineer's Notebook 113 contains a road survey for State Road No. 4 running from east to west. Shows corner as a spike set in east-west road and fence north. Ties:
- |         |    |        |
|---------|----|--------|
| 18" Elm | NE | 67.55' |
| 2" Hub  | NW | 84.25' |
- Stationing gives distances of 2614.0 feet to the NE corner and 2429.8 feet to the NW corner with a delta angle of 0-47' left.
- 2008 The County Surveyor's Office searched the area but found no evidence of the spike set in 1938. The overall distance from the NE Cor. and the NW Cor. measured 5044.26 ft. (76.43 ch.) which agrees reasonably well with GLO distance (76.90 ch.) and with the 1938 distances added (5043 ft.). A compass rule adjustment was performed between the NE Cor. and the NW Cor. using the 1938 Highway information with a deflection angle of 0°47' left (from east to west). The position after adjustment falls 0.5' south of the traveled centerline of an east-west road (65<sup>th</sup> St. N.E.). After adjustment the position gives 2430.08 ft. to the NW Cor. and 2614.30 ft. to the NE Cor., which agrees well with the 1938 measurements, above. The resulting tie to the NW Cor. (2430.08 ft.)(36.82 ch.) agrees with the GLO distance of 2435.4 ft. (36.9 ch). The position is accepted as marking the obliterated position and ties were made.

County Coordinates obtained by GPS  
 NAD 83 (1996 Adjustment)  
 N-137808.525  
 E-544825.383