

A 361594

Certified, Filed and or Recorded on
Nov. 06, 2008 AT 08:47AM

Signed: CK
MARILYN J NOVAK G V
BENTON COUNTY MINNESOTA
MARILYN J NOVAK
COUNTY RECORDER

CERTIFICATE OF LOCATION OF GOVERNMENT CORNER

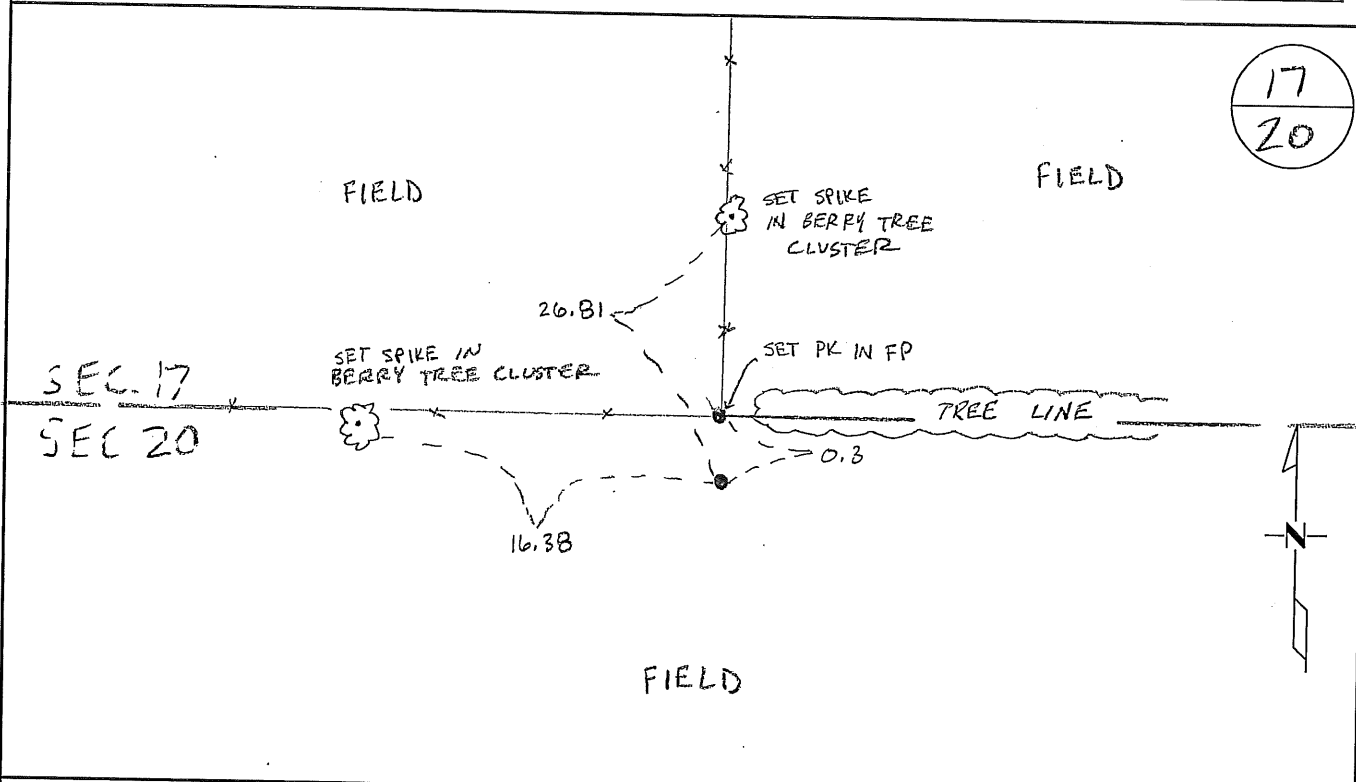
NORTH QUARTER Corner of Section 20, Township 37N, Range 28W
4TH Principal Meridian, State of Minnesota, County of Benton

At the corner location shown on the sketch:

On 10/16/08 found a 1/2" IRON PIPE CAP # 12236 UP 0.2'

left monument as found lowered monument removed monument (explain)

On _____ placed an _____



Statement of evidence for this corner location is on back of this page.

I hereby certify that this document was researched and prepared by me or under my direct supervision and that I am a licensed Land Surveyor under the laws of the State of Minnesota.

Signature Jan W. O'J
Deputy Benton County Surveyor
License No. 45872

Date: 11/03/2008

Benton County Surveyor's Office
 Jason W. Oberg, Deputy County Surveyor
 Minnesota License No. 45872

Statement of Evidence:

I201

North Quarter Corner of Section 20, Township 37 North, Range 28 West, Maywood Township, 4th Principal Meridian, Benton County, Minnesota.

- 1855 Original US General Land Office survey set a wood post at this location and bearing trees were recorded.
- | | | |
|-----------|----------|----------|
| 12" Sugar | N 50 ½ E | 29 links |
| 12" Sugar | S 52 E | 32 links |
- 1951 MN/DOT alignment map for TH 23 shows corner assumed at intersection of fence lines east, west, and north.
- 2001 William Lunser, LS 9394, found a ½" iron pipe with cap No. 12236 (Dave Regan) at the intersection of fence lines north, east, and west. He filed Certificate of Location (No. 283122). Gives measurements of 2618.34 feet to the NW corner and 2615.15 feet to the NE corner.
- 2002 No resurvey information was found on this corner in the Benton County records.
- 2008 The County Surveyor's Office searched and found a ½" iron pipe with cap #12236 at an east-west and north fenceline intersection, as reported by Lunser in 2001. Distances to the NW and NE Corners measures 2618.42 ft. and 2615.14 ft., respectively. The Surveyor accepts the position and updated ties.

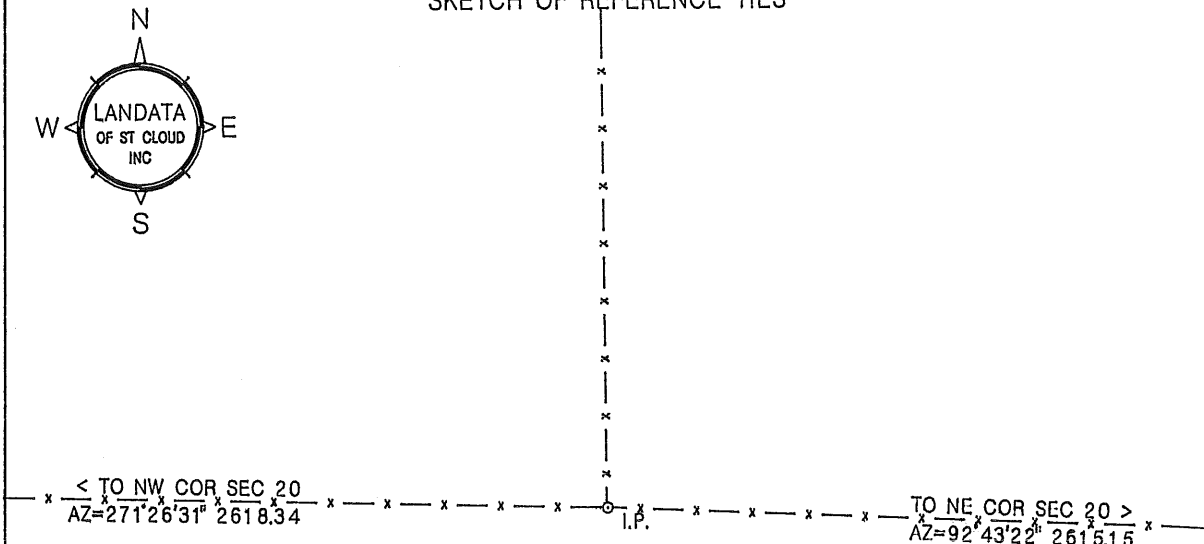
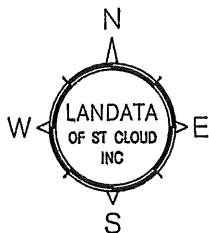
County Coordinates obtained by GPS
 NAD 83 (1996 Adjustment)
 N-148439.161
 E-549966.585

CERTIFICATE OF LOCATION OF GOVERNMENT CORNER

NORTH QUARTER corner of Section 20, Township 37, Range 28, 4th P.M.
Benton County, Minnesota.

On Aug 14, 2001, a one half inch iron pipe (I.P.) was found at this location.

SKETCH OF REFERENCE TIES



Statement of evidence relative to this corner location on back of page

I hereby certify that this document and the data contained herein was prepared by me or under my direct supervision.

William F. Lunser 1-29-02
Date

William F. Lunser, L.S. Mn Reg No 9394

FB; 158/10 DISC; 13

OFFICE OF THE COUNTY RECORDER
Benton County, Minnesota

I hereby certify that this document was filed in this office at ____:____.M. on the ____ day of _____, 20____.

County Recorder _____

By _____, Deputy

DOCUMENT NO. _____

STATEMENT OF EVIDENCE:

No records were found to indicate remonumentation of this corner after its original placement by the U.S. Government Survey.

A one half inch iron pipe bearing RLS 12236 (David P. Regan) was found at the intersection of fence lines north, west and east.

After determining distances to opposing section corners, the Regan monument was accepted as the best evidence of an obliterated government corner.



William F. Lunser, L.S.

283122

OFFICE OF
BENTON COUNTY RECORDER
BENTON COUNTY, MO
CERTIFIED TO BE FILED
AND/OR RECORDED ON

FEB 21 4 16 PM '02

MARILYN J. NOVAK
COUNTY RECORDER

BY  DEPUTY