

431892

Certified, Filed and or Recorded on
September 25, 2018 2:08 PM

BENTON COUNTY MINNESOTA
CHERYL L. KANTOR
COUNTY RECORDER

By: KB

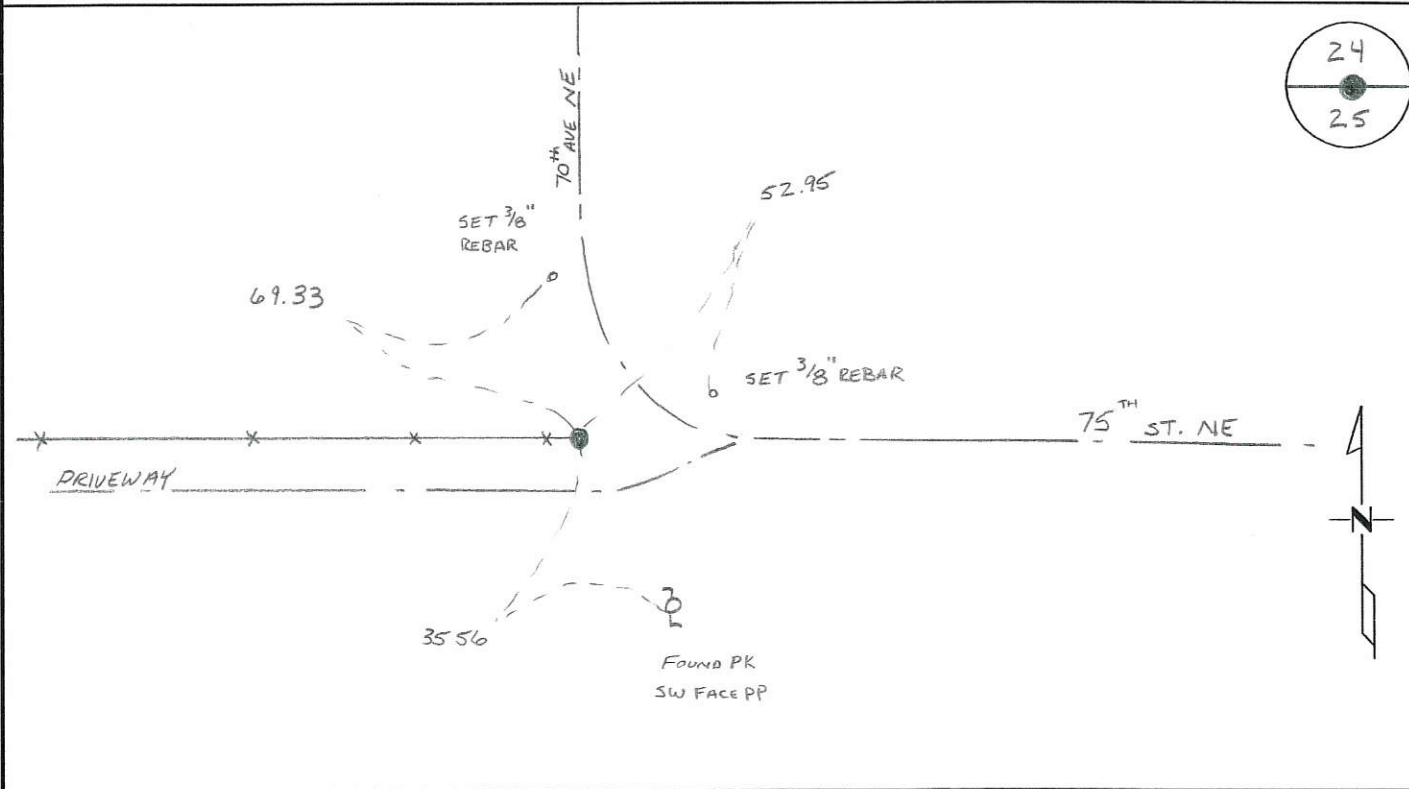
6 - V - 1

CERTIFICATE OF LOCATION OF GOVERNMENT CORNER

NORTH QUARTER Corner of Section 25, Township 37, Range 30
4TH Principal Meridian, State of Minnesota, County of Benton

At the corner location shown on the sketch:

- On 12-27-13 found a CAST IRON MONUMENT
- left monument as found lowered monument removed monument (explain)
- On _____ placed an _____



Statement of evidence for this corner location is on back of this page.

I hereby certify that this survey, plan, or report was prepared by me or under my direct supervision and that I am a duly Licensed Land Surveyor under the laws of the state of Minnesota.

Signature Jerome C. Wittstock
Jerome C. Wittstock, PS, CFedS, Benton County Surveyor
License No. 19552

Date: 14 Sept. 2018

Benton County Surveyor's Office

Statement of Evidence:

G251

North Quarter Corner of Section 25, Township 37 North, Range 30 West, 4th Principal Meridian, Mayhew Lake Township, Benton County, Minnesota.

1852 Original US General Land Office survey established corner marked by a wood post with bearing trees noted as:

12" Aspen	N 29 W	46 links
6" Aspen	S 42 E	8 links

1999 William Lunser, LS No. 9394, filed a Certificate of Location (#283106) for the North $\frac{1}{4}$ corner of Section 24. He notes a distance of 5361.62 feet to the N $\frac{1}{4}$ Corner Sec 25, but the type of monument at this corner is not noted.

2004 County Coordinates Obtained by GPS to CIM
NAD 83 (1996 Adjustment)
N- 142752.923
E- 508050.006

2008 The County Surveyor's Office found the CIM and verified the coordinates. The CIM measures 2665.55 feet to the northeast corner and 2646.61 feet to the northwest corner of Section 25. The CIM falls on a fence to the west, centerline to the east and north. The CIM is accepted as marking the corner position.

2013 The county Surveyor's Office found the CIM and verified the coordinates.