



Office of
Benton County Administrator
P.O. Box 129
Foley, Minnesota
56329-0129

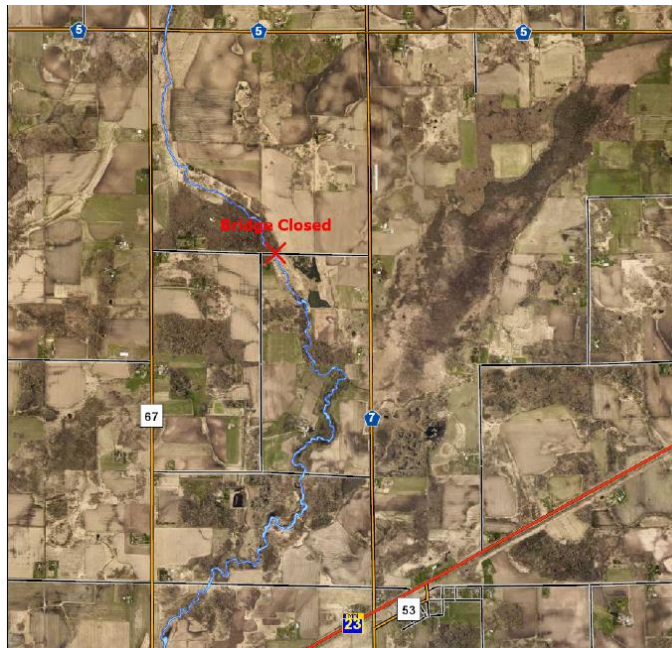
Montgomery Headley
Administrator
320-968-5004
TDD 320-968-8842
FAX 320-968-5339
www.co.benton.mn.us

NEWS RELEASE
October 8, 2019

NOTICE OF BRIDGE CLOSURE – 105th Street NE

The Benton County Highway Department is today closing a township road bridge due to safety concerns. The bridge is located on 105th St NE in Maywood Township, between County Road 67 and County State-Aid Highway 7. The bridge will remain closed indefinitely. During a routine safety inspection the County discovered the timber bridge structure had deteriorated to the point in which its structural integrity was compromised. Timber pilings supporting the bridge have numerous splits and decay, causing a partial collapse of some pilings and uneven settling of the bridge deck.

The location of the bridge is shown on the map below:



For further inquiries, please contact the Benton County Highway Department at (320) 968-5051. Or look for updates on the Highway Department Facebook page (www.facebook.com/bchwy.projects).

-END-