

BENTON COUNTY BOARD OF COMMISSIONERS
RESOLUTION # 2022-20

"A Resolution Leaving County Commissioner Districts Unchanged from 2012 Redistricting"

WHEREAS, the Benton County Board of Commissioners has reviewed the results of the 2020 US Census and population counts by the Commissioner districts established in 2012 after the 2010 US Census; and

WHEREAS, the County Board finds that the average 2020 population of Commissioner districts is 8,276 persons; and

WHEREAS, Minnesota Statutes §375.025 Subdivision 1 requires Commissioner district populations to fall within 10 percent of the average, or between 7,448 persons and 9,103 persons; and

WHEREAS, 2020 US Census populations are 7,581 for Commissioner District 1, 8,674 for Commissioner District 2, 7,529 for Commissioner District 3, 8,994 for Commissioner District 4, 8,601 for Commissioner District 5; and

WHEREAS, the County Board finds that all Commissioner districts fall within the 10 percent threshold when following the Commissioner districts established in 2012 redistricting; and

WHEREAS, the County Board considered options to more equalize Commissioner district populations and concluded that no changes were available without disrupting Commissioner terms of office; and

WHEREAS, when Commissioner district populations fall within the 10 percent threshold no redistricting is required.

NOW THEREFORE, BE IT RESOLVED that the County Commissioner districts adopted on April 17, 2012 by Resolution #2012-17 shall remain in effect; and

BE IT FURTHER RESOLVED that the 2012 Commissioner districts from Resolution #2012-17 are repeated here as follows:

District 1

St. George Township
Glendorado Township
Gilmanton Township
Maywood Township
Granite Ledge Township
City of Foley
City of Gilman

District 2

Mayhew Lake Township
Watab Township
Langola Township
Graham Township
Alberta Township
City of Rice
City of Royalton

District 3

City of Sartell, Precinct 2
City of Sauk Rapids, Precinct 3
City of Sauk Rapids, Precinct 4

District 4

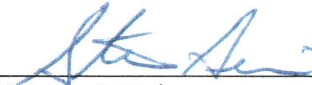
Sauk Rapids Township
Minden Township, Precinct 2
City of Sauk Rapids, Precinct 1
City of Sauk Rapids, Precinct 2
City of Sauk Rapids, Precinct 5

District 5

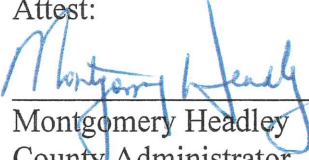
Minden Township, Precinct 1
City of Sauk Rapids, Precinct 6
City of St. Cloud, Ward 2 Precinct 1
City of St. Cloud, Ward 2 Precinct 3
City of St. Cloud, Ward 2 Precinct 4

BE IN FINALLY RESOLVED that the districts are, for illustrative purposes, identified in a map of the County attached hereto and marked Exhibit A.

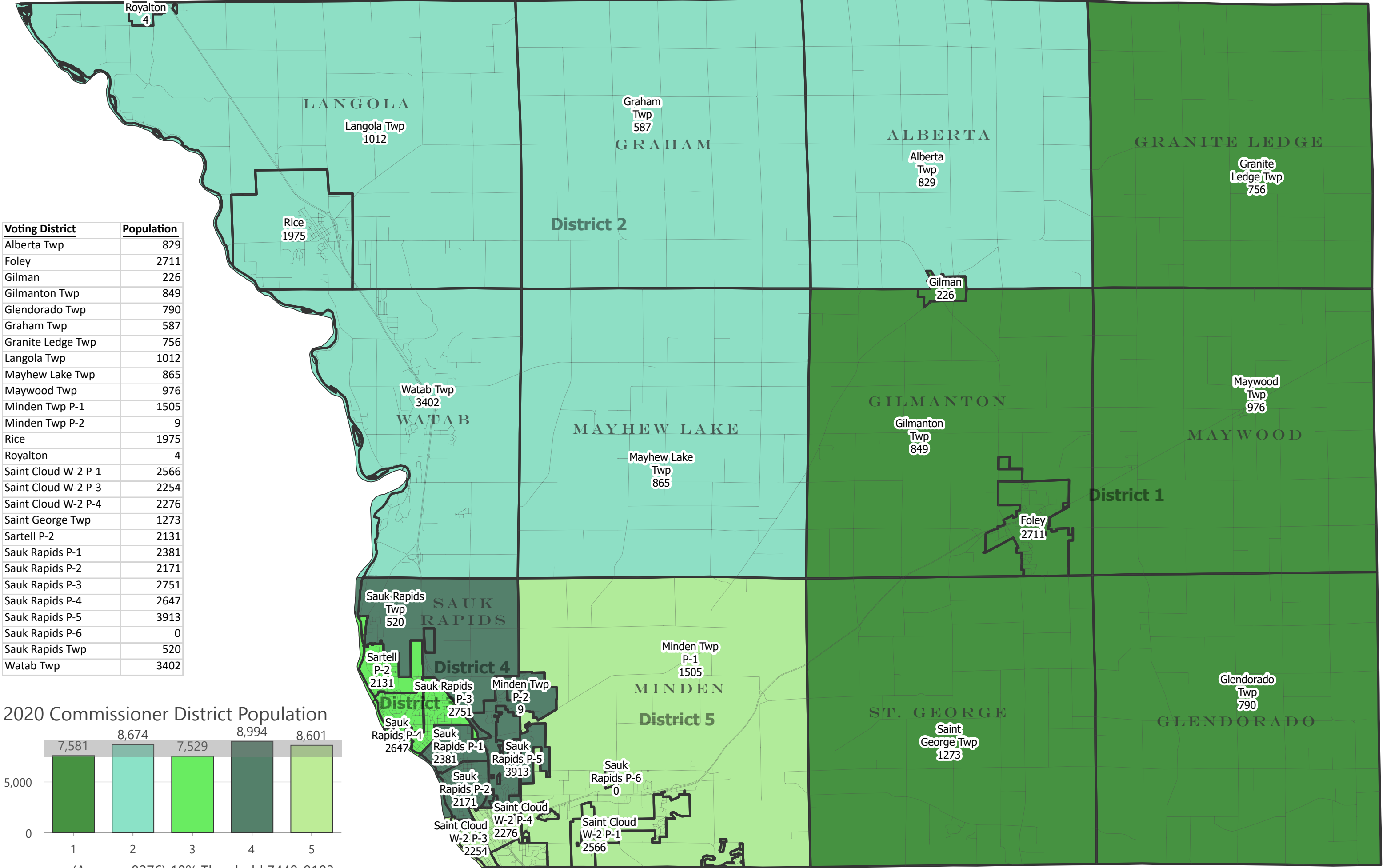
Adopted this 19th day of April 2022



Steven J. Heinen
Board Chair

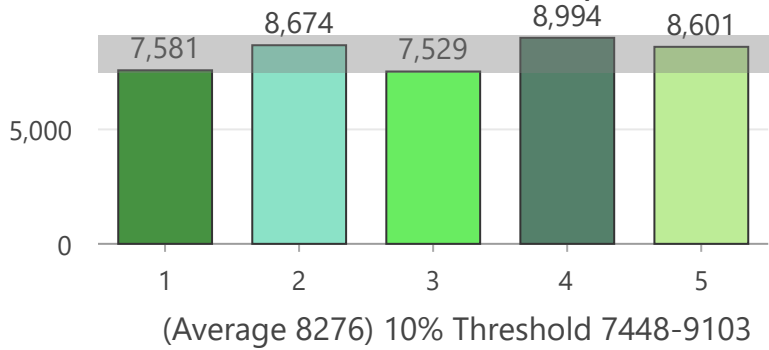
Attest:


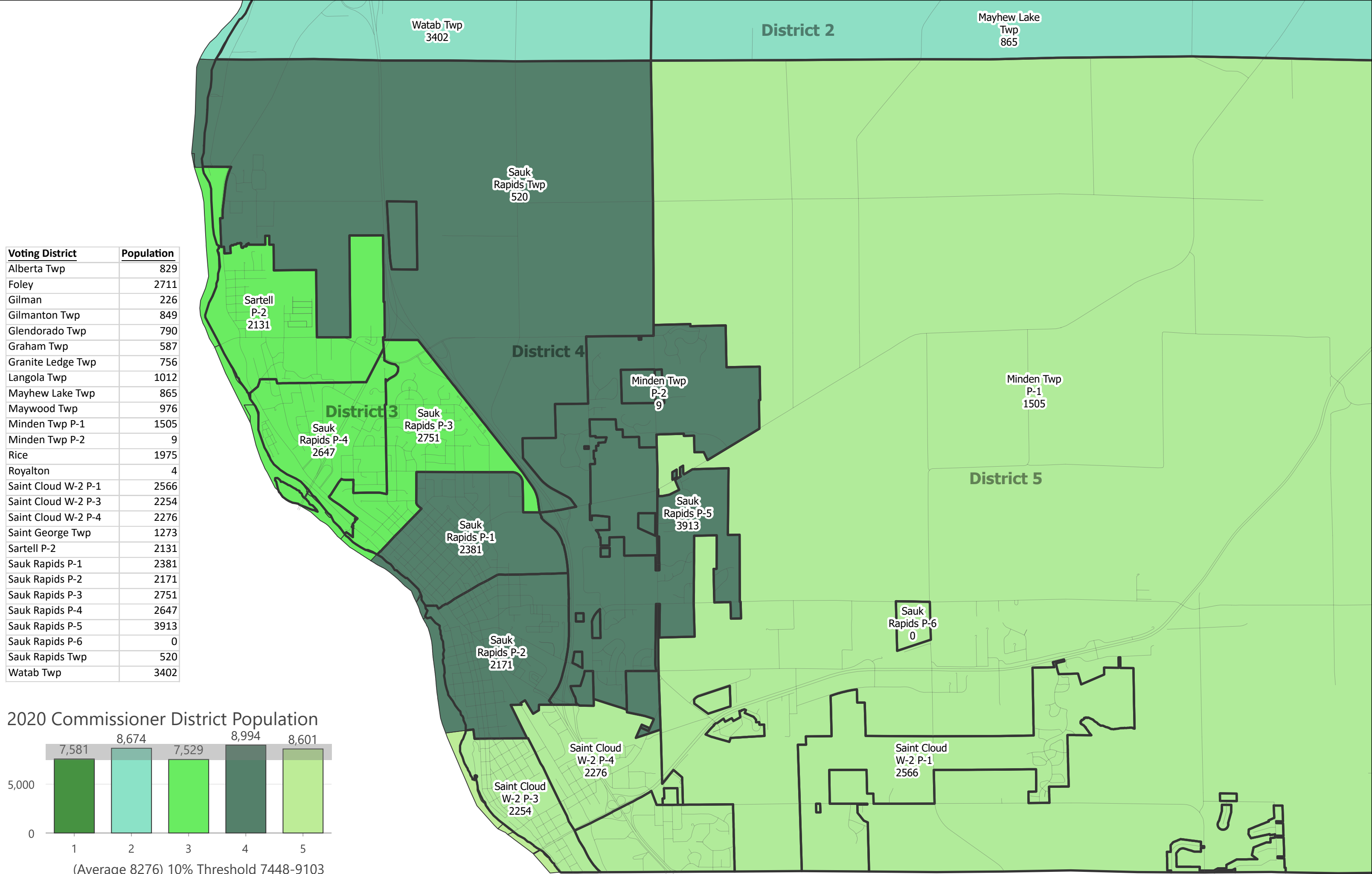
Montgomery Headley
County Administrator



Voting District	Population
Alberta Twp	829
Foley	2711
Gilman	226
Gilmanton Twp	849
Glendorado Twp	790
Graham Twp	587
Granite Ledge Twp	756
Langola Twp	1012
Mayhew Lake Twp	865
Maywood Twp	976
Minden Twp P-1	1505
Minden Twp P-2	9
Rice	1975
Royalton	4
Saint Cloud W-2 P-1	2566
Saint Cloud W-2 P-3	2254
Saint Cloud W-2 P-4	2276
Saint George Twp	1273
Sartell P-2	2131
Sauk Rapids P-1	2381
Sauk Rapids P-2	2171
Sauk Rapids P-3	2751
Sauk Rapids P-4	2647
Sauk Rapids P-5	3913
Sauk Rapids P-6	0
Sauk Rapids Twp	520
Watab Twp	3402

2020 Commissioner District Population





Voting District	Population
Alberta Twp	829
Foley	2711
Gilman	226
Gilmanton Twp	849
Glendorado Twp	790
Graham Twp	587
Granite Ledge Twp	756
Langola Twp	1012
Mayhew Lake Twp	865
Maywood Twp	976
Minden Twp P-1	1505
Minden Twp P-2	9
Rice	1975
Royalton	4
Saint Cloud W-2 P-1	2566
Saint Cloud W-2 P-3	2254
Saint Cloud W-2 P-4	2276
Saint George Twp	1273
Sartell P-2	2131
Sauk Rapids P-1	2381
Sauk Rapids P-2	2171
Sauk Rapids P-3	2751
Sauk Rapids P-4	2647
Sauk Rapids P-5	3913
Sauk Rapids P-6	0
Sauk Rapids Twp	520
Watab Twp	3402

2020 Commissioner District Population

