

# OmniBallot Assistive Voting Device



# OmniBallot

## Assistive Voting Device

- Voters use device for ballot display, reading, and marking.
- Replaced the Auto Mark
- Operates like a tablet (voters should be more familiar)
- Used in polling places with more than 500 registered voter during Township elections and all polling places during state and federal elections.

## What's the Same?

- Assists Voter by reading and marking ballot
- Prints on an existing ballot from the polling place
- Voted/printed ballot is fed into the tabulator by the voter to be counted

## Tablets allow voters to:

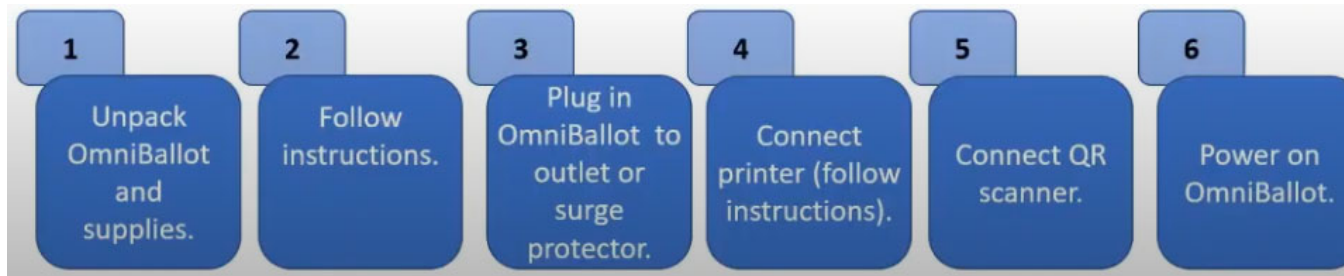
- Zoom in or out, making text larger or smaller
- Use headphones to listen to voting instructions and list of candidates for each office on the ballot
- Adjust the speed at which the speaker is talking
- Select a white screen with black lettering or black screen with white lettering
- Use Braille to aid them in making their selections
- Use of a Switch to aid them in making their selections if they are missing digits (fingers) or have limited dexterity.

## Inventory List

- OmniBallot Case (gray)
- Gold Key for USB Hub lock
- Okidata Printer
- Black Printer bag & Hand Truck
- QR scanner
- Navigation Pad (green dot)
- 3 Button Assembly (switch)
- Headphones
- Tablet power cable (red dot)
- Tablet to printer USB Cable (blue dot)
- Printer cable (yellow dot)
- Extension cord

## Set up reminders

- Follow Instructions provided in black Printer bag.
- Be ready at 7am-call immediately with issues
- Head Judge must assign an election judge to assist voter with ballot set-up and loading ballot on printer.



## Set up reminders

- The OmniBallot must be set up on a chair-height table.
- Place the OmniBallot in an area to protect voter privacy and to allow for proper social distancing.
  - Example: facing the wall versus facing out into the room and at least 6 feet away from other voters or the polling place line

## Additional Reminders

- All supplies needed for the OmniBallot will be inside of the black printer bag.
- **Do Not** put any of the supplies in the gray OmniBallot case at the end of the day as it can damage the touch screen.



## Additional Reminders

- Election Judge assisting the voter will scan the QR code on the Ballot and load the ballot into the paper tray.



- Election Judge will remind voter that they will need to insert the ballot into the DS200 tabulator in order for their vote to be counted.
- Election Judge will then step away and allow the voter to vote privately.

## Additional Reminders

- Ballot will need to be placed on the printer a certain way depending on if it is one-side vs a two-sided ballot.
- Sticker on paper tray will indicate how to load the ballot.



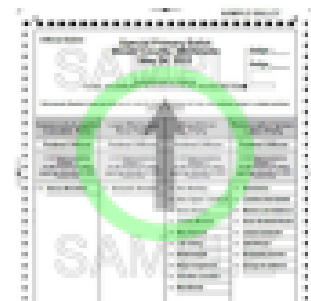
### **TWO Sided Ballot:**

**FACE DOWN  
BOTTOM FIRST**



### **ONE Sided Ballot:**

**FACE UP  
HEADER FIRST**



## Closing

- Follow closing instructions-reverse side of opening instructions.
- Please return (gray) OmniBallot Case to the Auditor-Treasurer's office Election night.



You may safely store the black printer bag that houses the printer and accessories at your precincts until the General Election unless your city or town does not have climate control where the equipment will be stored.